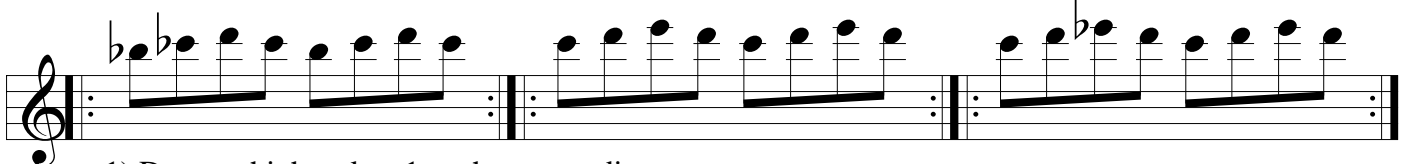
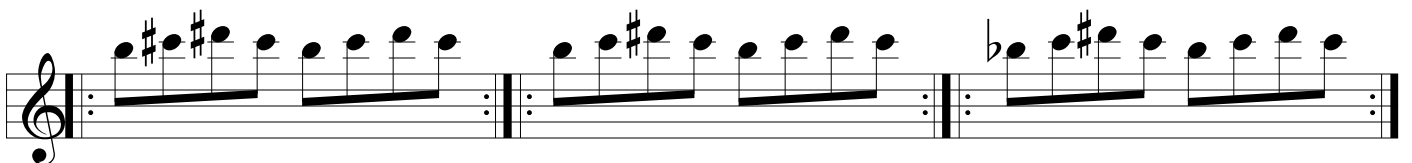
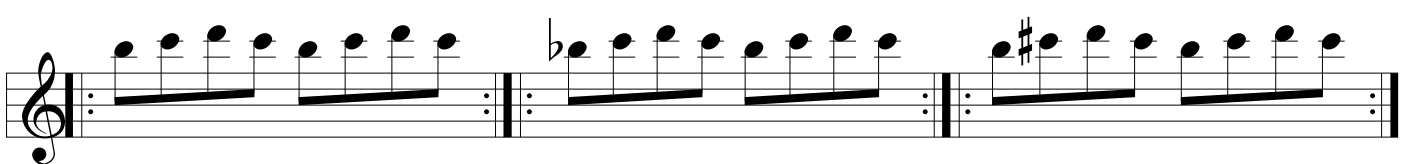
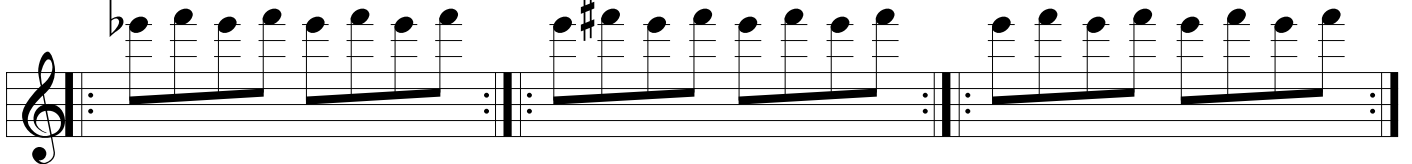
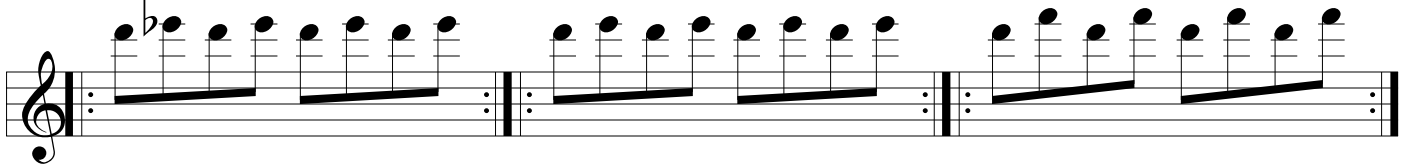
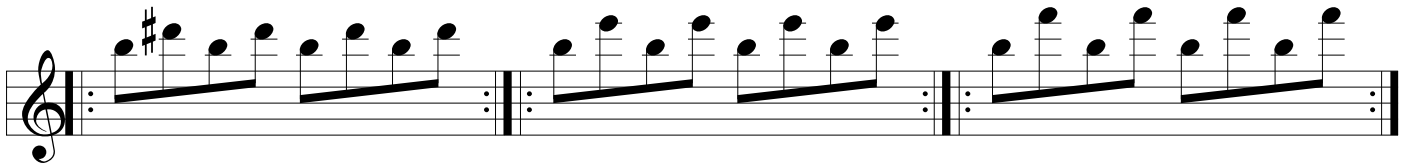
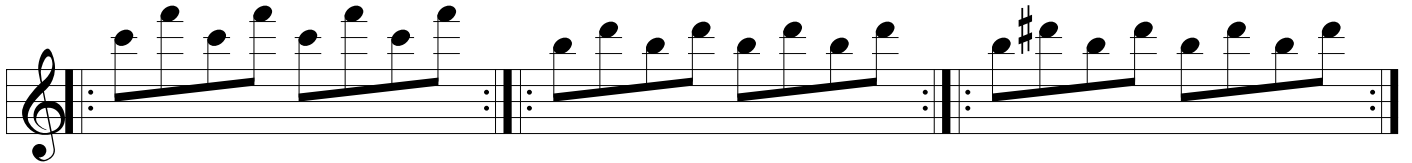
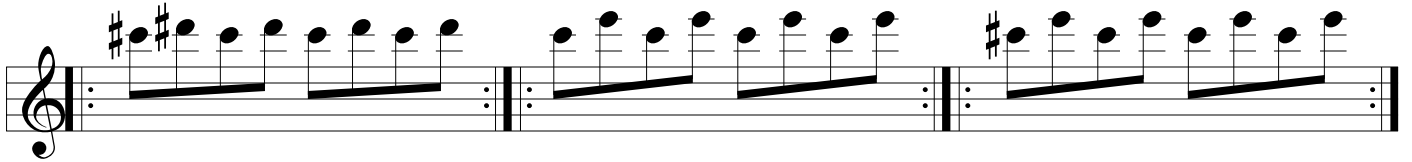


Palm Key Exercises



- 1) Depress highest key 1st when ascending
- 2) Close lower sounding key 1st when descending

First musical staff with treble clef, containing three measures of music with various accidentals (flats and sharps).

Second musical staff with treble clef, containing three measures of music with various accidentals (sharps).

Third musical staff with treble clef, containing three measures of music with various accidentals (sharps and flats).

Fourth musical staff with treble clef, containing three measures of music with various accidentals (flats).

Fifth musical staff with treble clef, containing three measures of music with various accidentals (sharps and flats).

Sixth musical staff with treble clef, containing three measures of music with various accidentals (flats).

Seventh musical staff with treble clef, containing three measures of music with various accidentals (flats).

Eighth musical staff with treble clef, containing three measures of music with various accidentals (flats and sharps).

Ninth musical staff with treble clef, containing three measures of music with various accidentals (sharps and flats).

Tenth musical staff with treble clef, containing three measures of music with various accidentals (sharps and flats).

The image displays four staves of musical notation, each containing a sequence of notes and accidentals. The notation is organized into four horizontal staves, each with a treble clef and a repeat sign. The notes are primarily eighth notes, and the accidentals include flats (b) and sharps (#). The first staff shows a scale starting with a flat (Bb) and a sharp (F#). The second staff shows a scale starting with a sharp (F#) and a flat (Bb). The third staff shows a scale starting with a sharp (F#) and a sharp (C#). The fourth staff shows a scale starting with a sharp (F#) and a sharp (C#). The notation is repeated three times across the staves, with a double bar line and repeat sign at the end of each staff.